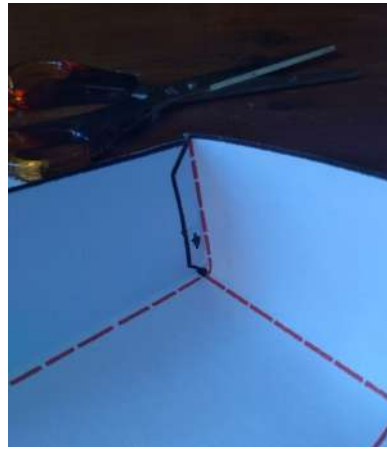


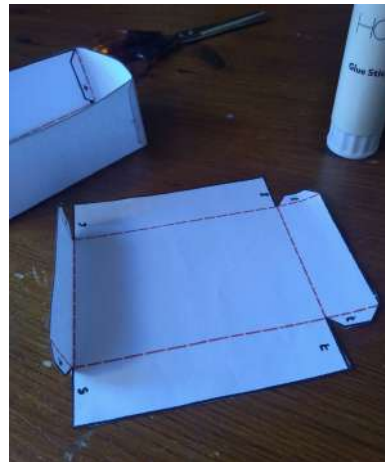
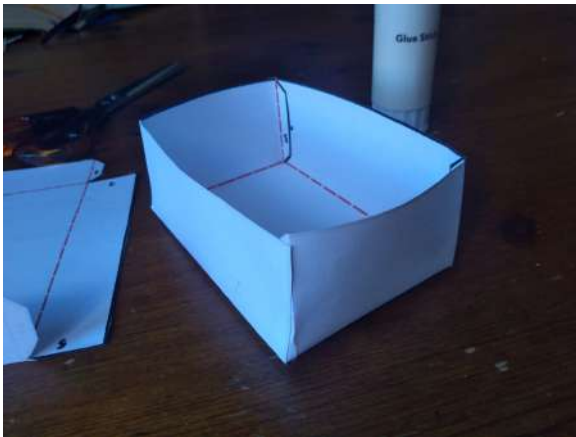
1. First cut out the lid and base pieces, you may want to decorate the outside (the plain side of the box template)



2. Then fold along the red dotted line, creasing the paper to create a box shape.



3. Next glue the tabs to the corresponding side, but put the glue on the outside of the tabs (the side without the number) so the side of the box can start to form.



4. Glue the rest of the tabs to the side so that you have the base of the box, then repeat the same process with the lid.  
5. After creating the lid, place the lid on the box and there you have your finished box.